

HE: Audrey Wubben
 (319) 458-9210
audreywubben@gmail.com

Myths and Hymns/WUDE LX Calendar

April 2023						
SUNDAY	MONDAY	TUESDAY	WEDNESDAY	THURSDAY	FRIDAY	SATURDAY
9	10	11	12	13	14	15
OFF (Rep Murder Strike)	LOAD-IN 7pm-11pm Start overhead hang Hang/cable insets (around scenic, don't cable 5), help scenic with tech tables (Linesets top priority)	TECH DAY #1 1pm-6pm (FULL CREW) Finish hang, cable overhead, Ladders (top of day), Drop/cable accessories	TECH DAY #2 1pm-6pm (FULL CREW) Deck fixtures, continue to troubleshoot, Partial Dark at 4 (works have to be on before this)	TECH DAY #3 1pm-6pm (FULL CREW) Notes, Continue Focus, String lights if time, running blue check, stand lights, partial dark 1-4	TECH DAY #4 1pm-6pm (FULL CREW) Notes, Practical work & Hazer/Fogger set up (Audrey), LX Full Dark 1:30-5	TBD NOTES* (FULL CREW) 10am-12pm
		LOAD-IN 7pm-9pm (FULL CREW) Troubleshoot, Drop color/TXT, running blues focus select dress parade lights DRESS PARADE 9pm-11pm (OFF)	LOAD-IN/FOCUS 7pm-11pm Notes/continue focus, Partial Dark full night	SPACING 7pm-11pm (LD, ALD, PROG, SPOTS)	TECH #1 7pm-11pm (LD, ALD, PROG, SPOTS)	8/10 #1 (LD, ALD, PROG, SPOTS)
16	17	18	19	20	21	22
TBD NOTES* (FULL CREW) 10am-12pm	TECH DAY #5 1pm-6pm (FULL CREW) Notes 1-2, 2-6 Dark Time	DRESS #2 7pm-11pm (LD, ALD, PROG, SPOTS)	DRESS #3 & PHOTOS 7pm-11pm (LD, ALD, PROG, SPOTS)	PREVIEW 7pm-11pm (LD, ALD, PROG, SPOTS)	SHOW #1 (BOARD OP, SPOTS)	SHOW #2 (BOARD OP, SPOTS)
8/10 #2 (LD, ALD, PROG, SPOTS)	DRESS #1 7pm-11pm					SHOW #3 (BOARD OP, SPOTS)
23	24	25	26	27	28	29
SHOW #4 (BOARD OP, SPOTS)	WUDE TECH DAY 1pm-6pm		10/12	TECH	SHOW #1	SHOW #2
CHANGEOVER 4pm-12am* (FULL CREW)	FOCUS 7pm-11pm			PREVIEW 7pm-11pm		
30						
SHOW #3 STRIKE						

* Subject to change
 Last Updates 3/23/23

LD: ERIN RILEY

HE: AUDREY WUBBENA

MYTHS AND HYMNS INVENTORY

FIXTURE INVENTORY				
TYPE	NEED	STOCK	REMAINING	Comments
INSTRUMENTS				
ETC Source 4 5°	0	6	6	NOT IN USE
ETC Source 4 10°	0	4	4	NOT IN USE
ETC Source 4 14°	4	4	0	Spotlights
ETC Source 4 19°	84	77	-7	
ETC Source 4 26°	85	102	17	
ETC Source 4 36°	5	36	31	
ETC Source 4 50°	0	11	11	NOT IN USE
ETC Source 4 25°-50° Zoom	0	4	4	NOT IN USE
ETC Source 4 90°	0	2	2	NOT IN USE
ETC Source 4 Parnel (750w)	0	6	6	NOT IN USE
ETC Source 4 Par Bodies (575w)	22	35	13	
ETC Source 4 Par VNFL (Check Stock)	0	35	35	NOT IN USE
ETC Source 4 Par NFL (Check Stock)	0	35	35	NOT IN USE
ETC Source 4 Par MFL (Check Stock)	0	35	35	NOT IN USE
ETC Source 4 Par WFL (Check Stock)	22	35	13	
Par 64 Bodies	23	58	35	
Par 64 VNFL (100w)	0	27	27	NOT IN USE
Par 64 NFL (100w)	0	36	36	NOT IN USE
Par 64 MFL (100w)	21	31	10	
Par 64 WFL (100w)	2	29	27	
Chauvet Ovation F-915 FC	27	32	5	
Morpheus M-Fader	0	26	26	NOT IN USE
Morpheus M-Fader Source 4 Size Face Plate	0	18	18	NOT IN USE
S-Faders	8	10	2	
Birdies	0	10	10	NOT IN USE
Mac Viper Profile	3	4	1	1 Out of Service

LD: ERIN RILEY

HE: AUDREY WUBBENA

MYTHS AND HYMNS INVENTORY

FIXTURE INVENTORY				
TYPE	NEED	STOCK	REMAINING	Comments
Chroma-Q Color Force II 72	0	8	8	NOT IN USE
Altman R40 Strip Light	0	16	16	NOT IN USE
Altman Zip Strip	0	7	7	NOT IN USE
3-cel Sky Cyc	0	3	3	NOT IN USE
Diversitronics Par Strobe	0	3	3	NOT IN USE
Star Strobe	0	16	16	NOT IN USE
Lighting Box (900w Photo Floods)	0	9	9	NOT IN USE
ACCESSORIES				
Rosco I-Cue Intelligent Mirror	4	4	0	I-Cue/DMX Iris Together
Rosco DMX Iris	4	4	0	I-Cue/DMX Iris Together
Apollo Gobo Rotator	0	3	3	NOT IN USE
6.25" Full Top Hat	0	39	39	NOT IN USE
6.25" Flocked Full Top Hat	0	7	7	NOT IN USE
6.25" Flocked Half Hat	0	36	36	NOT IN USE
6.25" Eyelash	0	6	6	NOT IN USE
6.25" - 7.5" Color Extender	0	36	36	NOT IN USE
7.5" Full Top Hat	0	42	42	NOT IN USE
7.5" Color Extender	0	24	24	NOT IN USE
7.5" Color Extender - Short	0	7	7	NOT IN USE
7.5" Barn Door	0	3	3	NOT IN USE
7.5" Egg Crate	0	8	8	NOT IN USE
10" Top Hat	0	15	15	NOT IN USE
10" Half Hat	0	2	2	NOT IN USE
10" Eyelash	0	4	4	NOT IN USE
10" Barn Door	0	10	10	NOT IN USE
Manual Iris	4	5	1	Spotlights

LD: ERIN RILEY

HE: AUDREY WUBBENA

MYTHS AND HYMNS INVENTORY

FIXTURE INVENTORY				
TYPE	NEED	STOCK	REMAINING	Comments
ATMOSPHERICS				
MGD ATMe Haze Generator	1	0	-1	Borrow from Rep
Le Maitre Peasouper	1	0	-1	Borrow from Rep

LD: ERIN RILEY

HE: AUDREY WUBBENA

MYTHS AND HYMNS COLOR

COLOR INVENTORY						
COLOR	NEED	SIZE	CUTS US	CUTS NEEDED	SHEETS TO ORDER	NOTES
R34	23	S4	1 Sheet (9)	14	2	RECEIVED
G882	0	S4	36 cuts	0	0	
R3313	22	S4	23 cuts	0	-	
L501	21	S4	9 cuts + 1 Sheet	3	1	RECEIVED
R3203	4	S4	Sooo many	0	-	
R4230	1	S4	Sooo many	0	-	
L709	54	S4	10 cuts	44	5	WAITING ON 1
R3409	1	S4	Sooo many	0	-	
R88	1	S4	Plenty	0	-	
L525	2	S4	Plenty	0	-	
L068	14	S4	24 cuts, 2 sheets	0	-	
R132	174	S4	167 cuts + 6 Sheets	0	-	
HS	8	S4	Lots	0	-	
R3409	10	S4 PAR	15 cuts	0	-	
R355	4	S4 PAR	0	8	2	For Spots (14 deg), Wait to cut incase switch to 10 deg - RECEIVED
R55	12	S4 PAR	0	12	2	RECEIVED
HS	0	S4 PAR	-	0	-	
R80	27	PAR 64	0	27	14	Order double for burn - 5 MORE
R316	3	PAR 64	Plenty	0	-	
R55	1	PAR 64	0	1	1	Can be used for extra S4 Par if needed
HS	27	PAR 64	24 cuts, + 1 Sheet + scraps	0	-	
R15	4	Sheets	0		4	Already ordered - For Scenic
R42	4	Sheets	0		4	Already ordered - For Scenic
Pink	4	Sheets	0		4	Already ordered - For Scenic

LD: ERIN RILEY

MYTHS AND HYMNS DMX

HE: AUDREY WUBBENA

DMX BREAKDOWN					
CHANNEL	ADDRESS	NODE/PORT	LOCATION	FIXTURE PROFILE	FIXTURE TYPE
UNIVERSE 1					
-	1/1	ETC Net	Network	Dimmer	ETC 98 Racks
-	1/400	Hard DMX Port	Console	Dimmer	Strand 48 Rack
UNIVERSE 2					
-	2/255	A: Port 1	-	Dimmer	House Lights
421	2/1	D: Port 1	Deck	Dimmer	ADJ Entour Chill 800w
422	2/2			Dimmer	ADJ Entour Chill 800w
UNIVERSE 3					
902		D: Port 2	Practical: Lantern	Dimmer	RC4 Wireless DMX
UNIVERSE 4					
171	4/1-18	B: Port 1	Electric 1	Ovation F 915FC 18ch	Chauvet Ovation F915 260w
172	4/19-36				
174	4/37-54				
UNIVERSE 5					
169	5/1-18	B: Port 2	Electric 2	Ovation F 915FC 18ch	Chauvet Ovation F915 260w
170	5/19-36				Chauvet Ovation F915 260w
811	5/100-139			Mac Viper Performance 16B Extended	Martin MAC Viper 1225w
812	5/200-239			Mac Viper Performance 16B Extended	Martin MAC Viper 1225w
813	5/300-339			Mac Viper Performance 16B Extended	Martin MAC Viper 1225w
UNIVERSE 8					
351	8/1-18	C: Port 1	Vom Right	Ovaion Reve E3 18ch	Chauvet Reve E-3 260w
352	8/19-36				
353	8/37-54		Vom Left		
354	8/55-72				

LD: ERIN RILEY

MYTHS AND HYMNS DMX

HE: AUDREY WUBBENA

DMX BREAKDOWN								
CHANNEL	ADDRESS	NODE/PORT	LOCATION	FIXTURE PROFILE	FIXTURE TYPE			
UNIVERSE 9								
814	9/504-507 9/510	A: Port 2	Inner Ring Right	Rosco I-Cue	Rosco I-Cue			
				Generic DMX Iris	DMX Iris			
815	9/492-495 9/509		Inner Ring Left	Rosco I-Cue	Rosco I-Cue			
				Generic DMX Iris	DMX Iris			
816	9/500-503 9/512		New Pipe Right	Rosco I-Cue	Rosco I-Cue			
				Generic DMX Iris	DMX Iris			
817	9/496-499 9/511		New Pipe Left	Rosco I-Cue	Rosco I-Cue			
				Generic DMX Iris	DMX Iris			
UNIVERSE 11								
152	11/1-18	A: Port 4	Low Center Cloud	Ovation F 915FC 18ch	Chauvet Ovation F915 260w			
156	11/19-36		Inner Ring Left					
153	11/37-54		Inner Ring Left					
157	11/55-72		Step Down Left					
163	11/73-90		Step Down Left					
158	11/91-108		Step Down Left					
824	11/109-126		Outer Ring Left					
823	11/127-144		Outer Ring Left					
313	11/145-162		Outer Ring Left					
314	11/163-180		Outer Ring Left					
UNIVERSE 12								
155	12/1-18		A: Port 5			Inner Ring Right	Ovation F 915FC 18ch	Chauvet Ovation F915 260w
151	12/19-36	Inner Ring Right						
154	12/37-54	Step Down Right						
159	12/55-72	Step Down Right						
160	12/73-90	Step Down Right						
822	12/91-108	Outer Ring Right						
821	12/109-126	Outer Ring Right						

LD: ERIN RILEY

HE: AUDREY WUBBENA

MYTHS AND HYMNS DMX

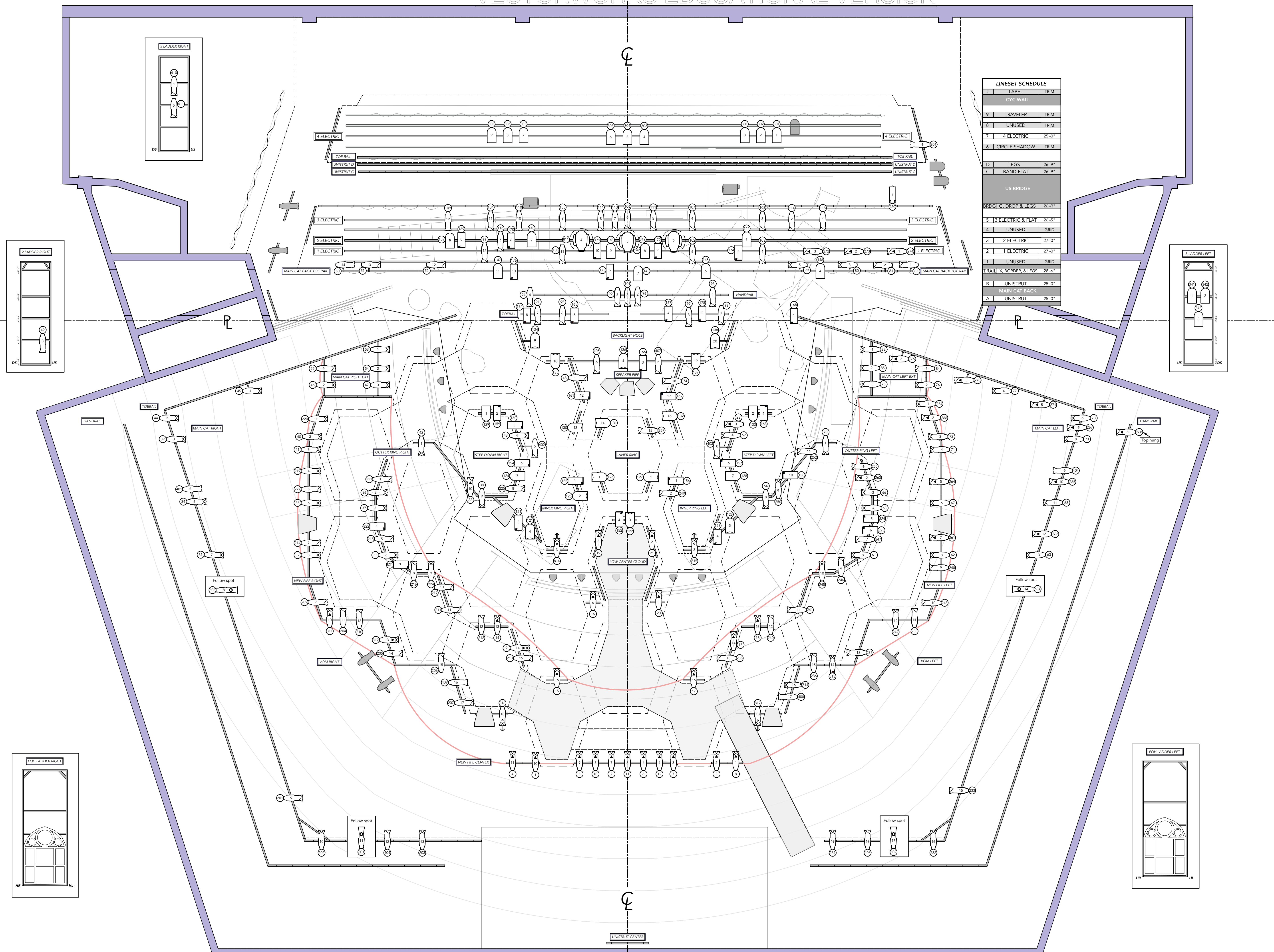
DMX BREAKDOWN					
CHANNEL	ADDRESS	NODE/PORT	LOCATION	FIXTURE PROFILE	FIXTURE TYPE
UNIVERSE 13					
161	13/1-18	A: Port 6	Inner Ring	Ovation F 915FC 18ch	Chauvet Ovation F915 260w
162	13/19-36		Inner Ring		
166	13/37-54		Speaker Pipe		
164	13/55-72		Backlight Hole		
165	13/73-90		Backlight Hole		
167	13/91-108		Backlight Hole		
175	13/109-126		Backlight Hole		
168	13/127-144		New Pipe Right Ex.		
UNIVERSE 14					
176	14/1-18	A: Port 7	Main Cat Back	Ovation F 915FC 18ch	Chauvet Ovation F915 260w
173	14/19-36		Main Cat Back		
420	14/500		Main Cat Back	Atmosphere	MDG ATMe Hazer
313	14/145-162		Lineset 7	Ovation Reve E3 18ch	Chauvet Reve E-3 260w
314	14/163-180		Lineset 7		

LD: ERIN RILEY

HE: AUDREY WUBBENA

MYTHS AND HYMNS NODE KEY

NODE KEY		
NODE	PORT	UNIVERSE
NODE A (INNER RING)	1	2
	2	9
	3	10
	4	11
	5	12
	6	13
	7	14
NODE B (GALLERY SL)	1	7
	2	7
	3	7
	4	14
	5	15
	6	16
NODE C (GALLERY SR)	1	6
	2	6
	3	6
NODE D (VOM SL)	1	8
	2	9
NODE E (VOM SR)	1	4
	2	5



LINESET SCHEDULE	
#	LABEL TRIM
CYC WALL	
9	TRAVELER TRIM
8	UNUSED TRIM
7	4 ELECTRIC 25'-0"
6	CIRCLE SHADOW TRIM
US BRIDGE	
D	LEGS 26'-9"
C	BAND FLAT 26'-9"
BRDGI G. DROP & LEGS 26'-9"	
5	3 ELECTRIC & FLAT 26'-5"
4	UNUSED GRID
3	2 ELECTRIC 27'-0"
2	1 ELECTRIC 27'-0"
1	UNUSED GRID
TRAIL/LX BORDER & LEGS 28'-5"	
B	UNISTRUT 25'-0"
MAIN CAT BACK	
A	UNISTRUT 25'-0"

INSTRUMENT KEY

- ETC Source Four 14 Degree 750w
- ETC Source Four 19 Degree 750w
- ETC Source Four 26 Degree 750w
- ETC Source Four 36 Degree 750w
- Altmann Par 64 MFL 1000w
- Altmann Par 64 WFL 1000w
- Chauvet Ovation P915 260w
- Chauvet Reve E-3 260w
- Martin MAC Viper 1225w
- MDG ATMe Haer
- ADJ Entour Chl 800w

LABEL LEGEND

- COLOR 1381
- TEXTURE 1
- UNIT NUMBER 1
- CHANNEL 900

ACCESSORY KEY

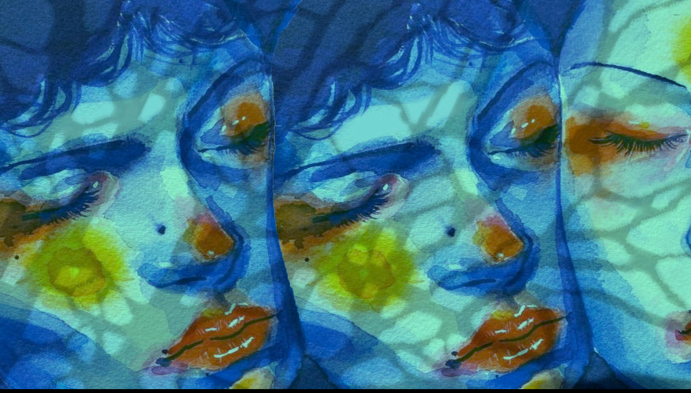
- Drop-in Iris
- 10in Top Hat
- Rosco I-Cue
- DMX Iris

NOTES

- Please put all channels on Main Cat Back on side arms
- Please patch all Ovation 915 FC's in 18ch mode
- Please have extra cuts of color, frost, texture, and heat shield ready at focus

REVISIONS

- 02.28.23 Prelim
- 03.01.23 String lights Added
- 03.24.23 LEDs added, Fogger swapped out
- 03.28.23 LEDs added, barrels swapped out
- 04.07.23 Added chn 404-9 for aisles, removed pars on MainCat



MYTHS AND HYMNS

Written by: Adam Guettel

DIRECTOR
EVANGELINE WHITLOCK

SCENIC DESIGNER
LILY TOMASIC

COSTUME DESIGNER
ZOE COX

WIG AND MAKEUP DESIGNER
BEKAH TOONE

SOUND DESIGNER
KATELYN GILLETE

ASST. LIGHTING DESIGNER
ASH NEECE

ASST. LIGHTING DESIGNER
CLAIRE WINSTON

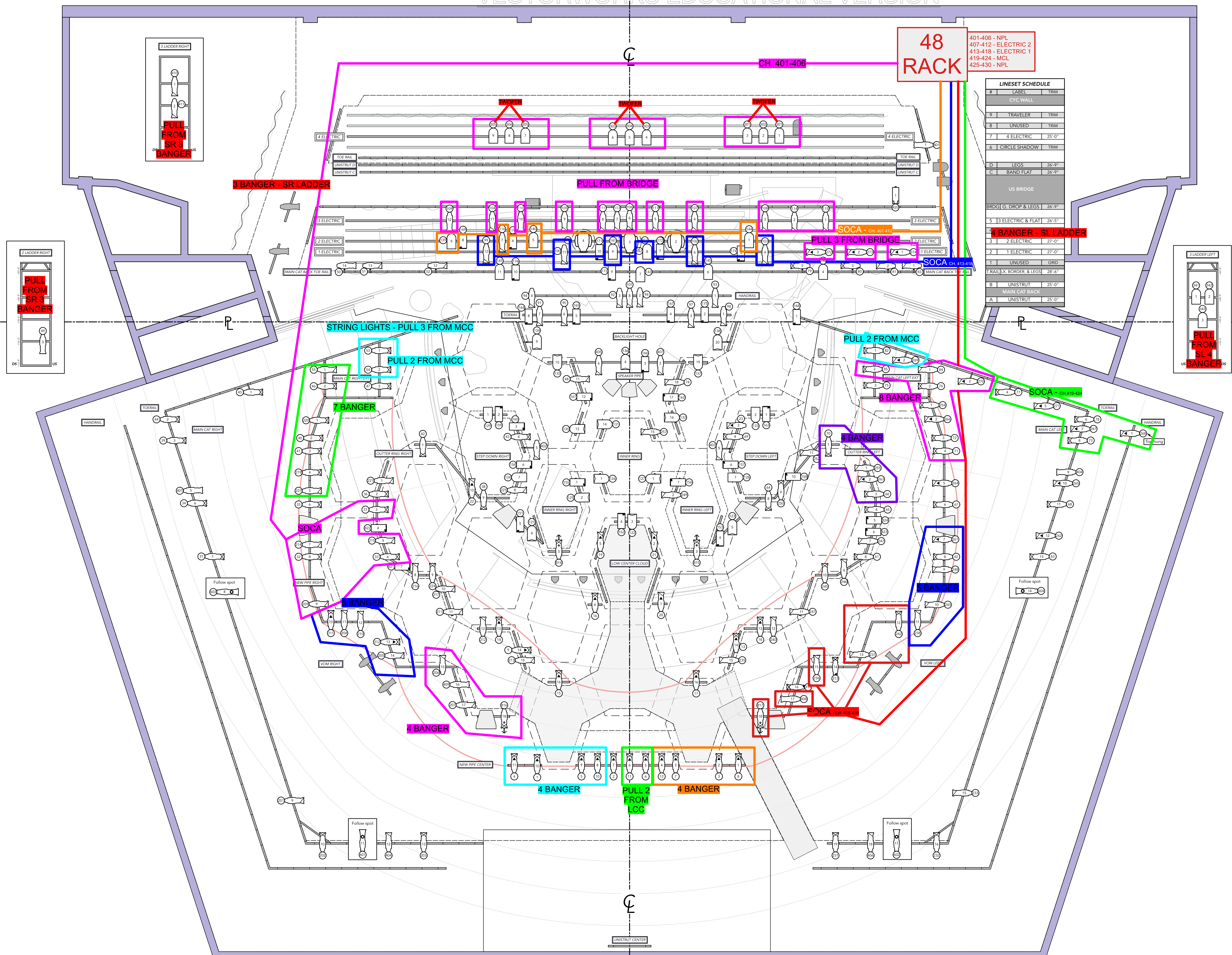
HEAD ELECTRICIAN
AUDREY WUBBENA

VIRGINIA JACKSON BROWNING THEATER
LORETTA-HILTON CENTER FOR THE PERFORMING ARTS
130 EDGAR RD ST. LOUIS, MO 63119

LIGHTING DESIGN & DRAFTED BY:
 ERIN RILEY
314.933.0623
erinriley031@gmail.com

OVERHEAD PLOT

PLATE 1 OF 5
SCALE: 1/4" = 1'-0"
WHEN PRINTED ON 24x36



INSTRUMENT KEY

- ETC Source Four 14 Degree 750w
- ETC Source Four 19 Degree 750w
- ETC Source Four 26 Degree 750w
- ETC Source Four 36 Degree 750w
- Altmann Par 64 MFL 1000w
- Altmann Par 64 WFL 1000w
- Chauvet Ovation P915 260w
- Chauvet Reve E-3 260w
- Martin MAC Viper 1225w
- MDG ATMe Haaz
- ADJ Entour Chl 800w

LABEL LEGEND

- COLOR ——— UNIT NUMBER
- TEXTURE ——— CHANNEL

ACCESSORY KEY

- Drop-in Iris
- 10in Top Hat
- Rosco I-Cue
- DMX Iris

NOTES

- Please put all channels on Main Cat Back on side arms
- Please patch all Ovation 915 FC's in 18ch mode
- Please have extra cuts of color, frost, texture, and heat shield ready at focus

REVISIONS

02.28.23	Prelim
03.01.23	String lights Added
03.24.23	LEDs added, Fogger swapped out
03.28.23	LEDs added, barrels swapped out
04.07.23	Added chn 404-9 for aisles, removed pars on MainCat



MYTHS AND HYMNS

Written by: Adam Guettel

DIRECTOR
EVANGELINE WHITLOCK

SCENIC DESIGNER
LILY TOMASIC

COSTUME DESIGNER
ZOE COX

WIG AND MAKEUP DESIGNER
BEKAH TOONE

SOUND DESIGNER
KATELYN GILLETE

ASST. LIGHTING DESIGNER
ASH NEECE

ASST. LIGHTING DESIGNER
CLAIRE WINSTON

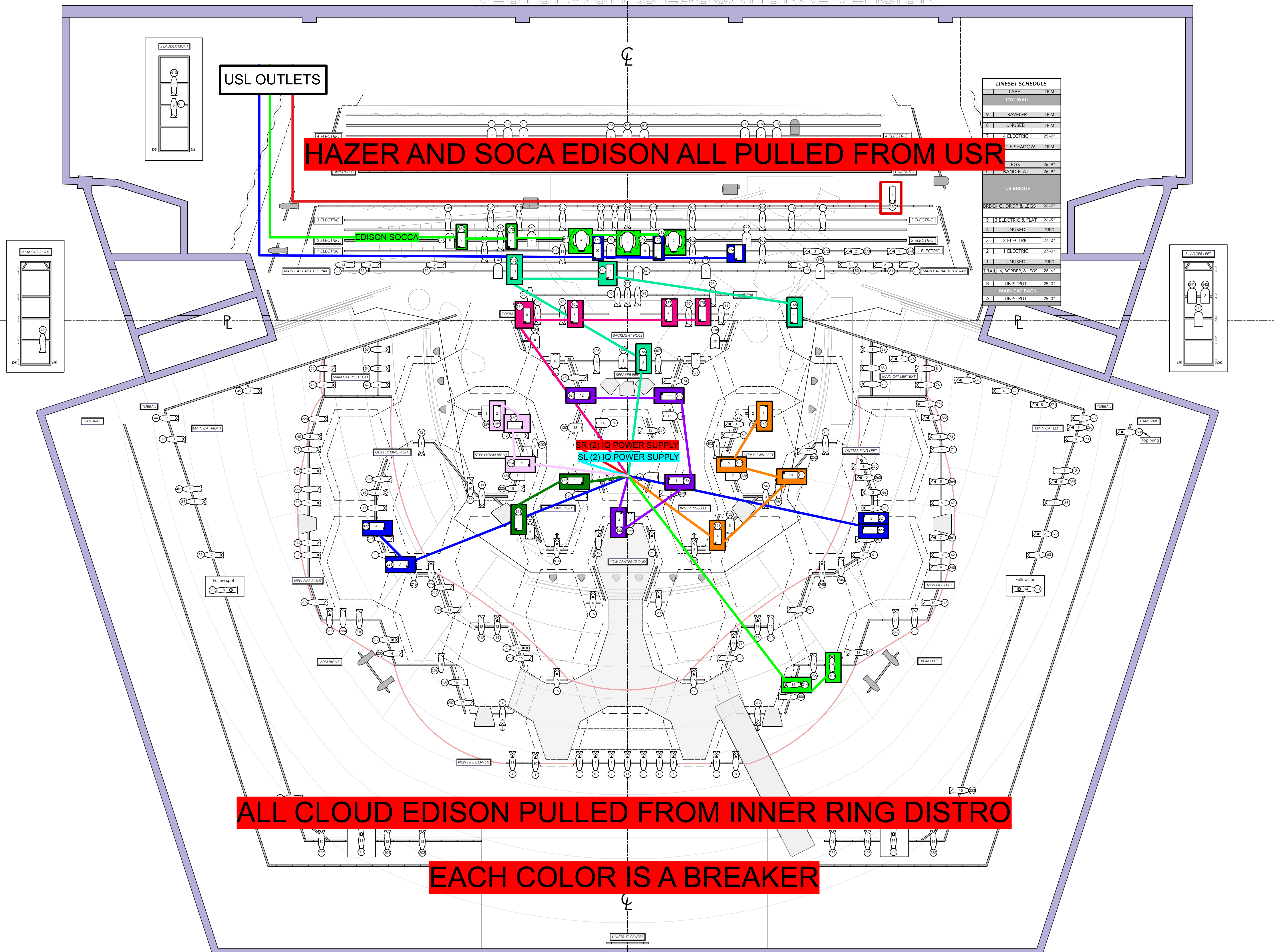
HEAD ELECTRICIAN
AUDREY WUBBENA

VIRGINIA JACKSON BROWNING THEATER
LORETTO-HILTON CENTER FOR THE PERFORMING ARTS
130 EDGAR RD ST. LOUIS, MO 63119

LIGHTING DESIGN & DRAFTED BY:
 ERIN RILEY
314.933.0623
erinriley031@gmail.com

DIMMER PLOT

PLATE 2 OF 5
SCALE: 1/4" = 1'-0"
WHEN PRINTED ON 24x36



INSTRUMENT KEY

- ETC Source Four 14 Degree 750w
- ETC Source Four 19 Degree 750w
- ETC Source Four 26 Degree 750w
- ETC Source Four 36 Degree 750w
- Altmann Par 64 MFL 1000w
- Altmann Par 64 WFL 1000w
- Chauvet Ovation P915 260w
- Chauvet Reve E-3 260w
- Martin MAC Viper 1225w
- MDG ATMe Haer
- ADJ Entour Chl 800w

LABEL LEGEND

- COLOR ——— UNIT NUMBER
- TEXTURE ——— CHANNEL

ACCESSORY KEY

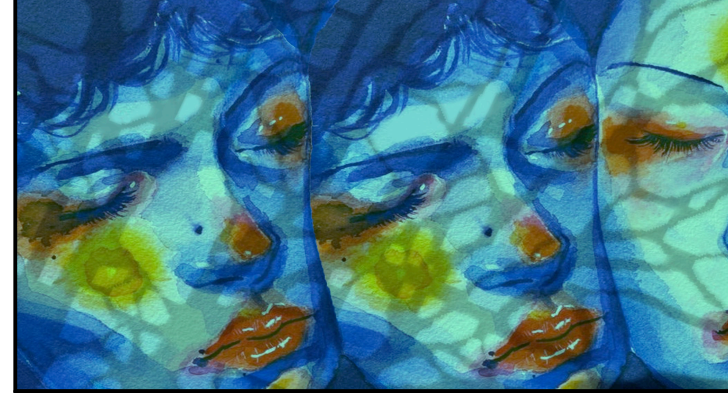
- Drop-in Iris
- 10in Top Hat
- Rosco I-Cue
- DMX Iris

NOTES

- Please put all channels on Main Cat Back on side arms
- Please patch all Ovation 915 FC's in 18ch mode
- Please have extra cuts of color, frost, texture, and heat shield ready at focus

REVISIONS

- 02.28.23 Prelim
- 03.01.23 String lights Added
- 03.24.23 LEDs added, Fogger swapped out
- 03.28.23 LEDs added, barrels swapped out
- 04.07.23 Added chn 404-9 for aisles, removed pars on MainCat



MYTHS AND HYMNS

Written by: Adam Guettel

DIRECTOR
EVANGELINE WHITLOCK

SCENIC DESIGNER
LILY TOMASIC

COSTUME DESIGNER
ZOE COX

WIG AND MAKEUP DESIGNER
BEKAH TOONE

SOUND DESIGNER
KATELYN GILLETE

ASST. LIGHTING DESIGNER
ASH NEECE

ASST. LIGHTING DESIGNER
CLAIRE WINSTON

HEAD ELECTRICIAN
AUDREY WUBBENA

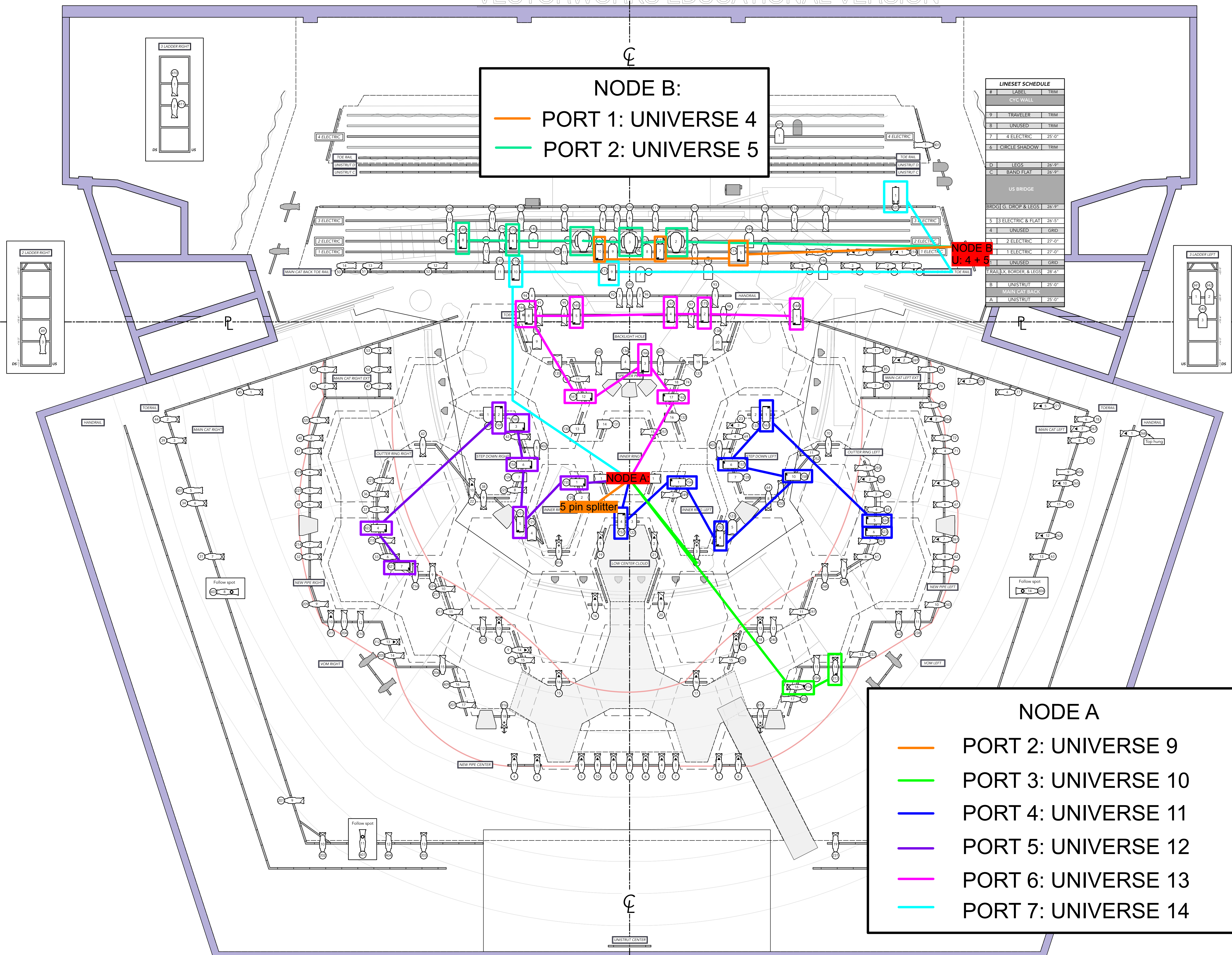
VIRGINIA JACKSON BROWNING THEATER
LORETTA-HILTON CENTER FOR THE PERFORMING ARTS
130 EDGAR RD ST. LOUIS, MO 63119

LIGHTING DESIGN & DRAFTED BY:

ERIN RILEY
314.933.0623
erinriley031@gmail.com

HOT POWER PLOT

PLATE **3** OF 5
SCALE: 1/4" = 1'-0"
WHEN PRINTED ON 24x36



NODE B:
 — PORT 1: UNIVERSE 4
 — PORT 2: UNIVERSE 5

LINESET SCHEDULE		
#	LABEL	TRIM
CYC WALL		
9	TRAVELER	TRIM
8	UNUSED	TRIM
7	4 ELECTRIC	23'-0"
6	CIRCLE SHADOW	TRIM
US BRIDGE		
D	LEGS	26'-9"
C	BAND FLAT	26'-9"
BRDGI G. DROP & LEGS		
5	3 ELECTRIC & FLAT	26'-5"
4	UNUSED	GRID
3	2 ELECTRIC	27'-0"
2	1 ELECTRIC	27'-0"
1	UNUSED	GRID
TRAIL/LX, BORDER, & LEGS		
B	UNISTRUT	25'-0"
MAIN CAT BACK		
A	UNISTRUT	25'-0"

NODE A

- PORT 2: UNIVERSE 9
- PORT 3: UNIVERSE 10
- PORT 4: UNIVERSE 11
- PORT 5: UNIVERSE 12
- PORT 6: UNIVERSE 13
- PORT 7: UNIVERSE 14

INSTRUMENT KEY

- ETC Source Four 14 Degree 750w
- ETC Source Four 19 Degree 750w
- ETC Source Four 26 Degree 750w
- ETC Source Four 36 Degree 750w
- Altmann Par 64 MFL 1000w
- Altmann Par 64 WFL 1000w
- Chauvet Ovation P915 260w
- Chauvet Reve E-3 260w
- Martin MAC Viper 1225w
- MDG ATMe Haar
- ADJ Entour Chl 800w

LABEL LEGEND

- COLOR — UNIT NUMBER
- TEXTURE — CHANNEL

ACCESSORY KEY

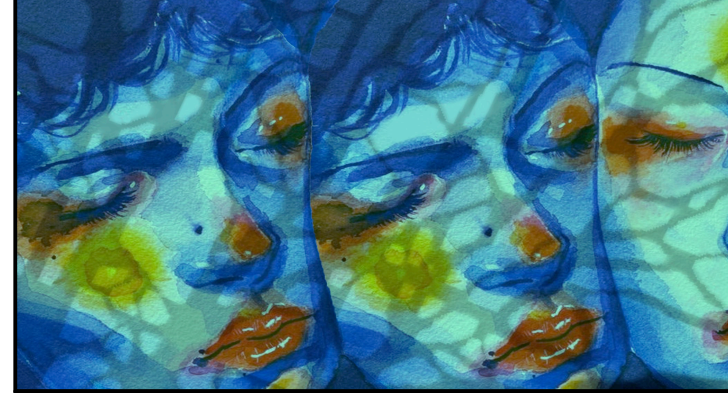
- Drop-in Iris
- 10in Top Hat
- Rosco I-Cue
- DMX Iris

NOTES

- Please put all channels on Main Cat Back on side arms
- Please patch all Ovation 915 FC's in 18ch mode
- Please have extra cuts of color, frost, texture, and heat shield ready at focus

REVISIONS

- 02.28.23 Prelim
- 03.01.23 String lights Added
- 03.24.23 LEDs added, Fogger swapped out
- 03.28.23 LEDs added, barrels swapped out
- 04.07.23 Added chn 404-9 for aisles, removed pars on MainCat



MYTHS AND HYMNS

Written by: Adam Guettel

DIRECTOR
EVANGELINE WHITLOCK

SCENIC DESIGNER
LILY TOMASIC

COSTUME DESIGNER
ZOE COX

WIG AND MAKEUP DESIGNER
BEKAH TOONE

SOUND DESIGNER
KATELYN GILLETE

ASST. LIGHTING DESIGNER
ASH NEECE

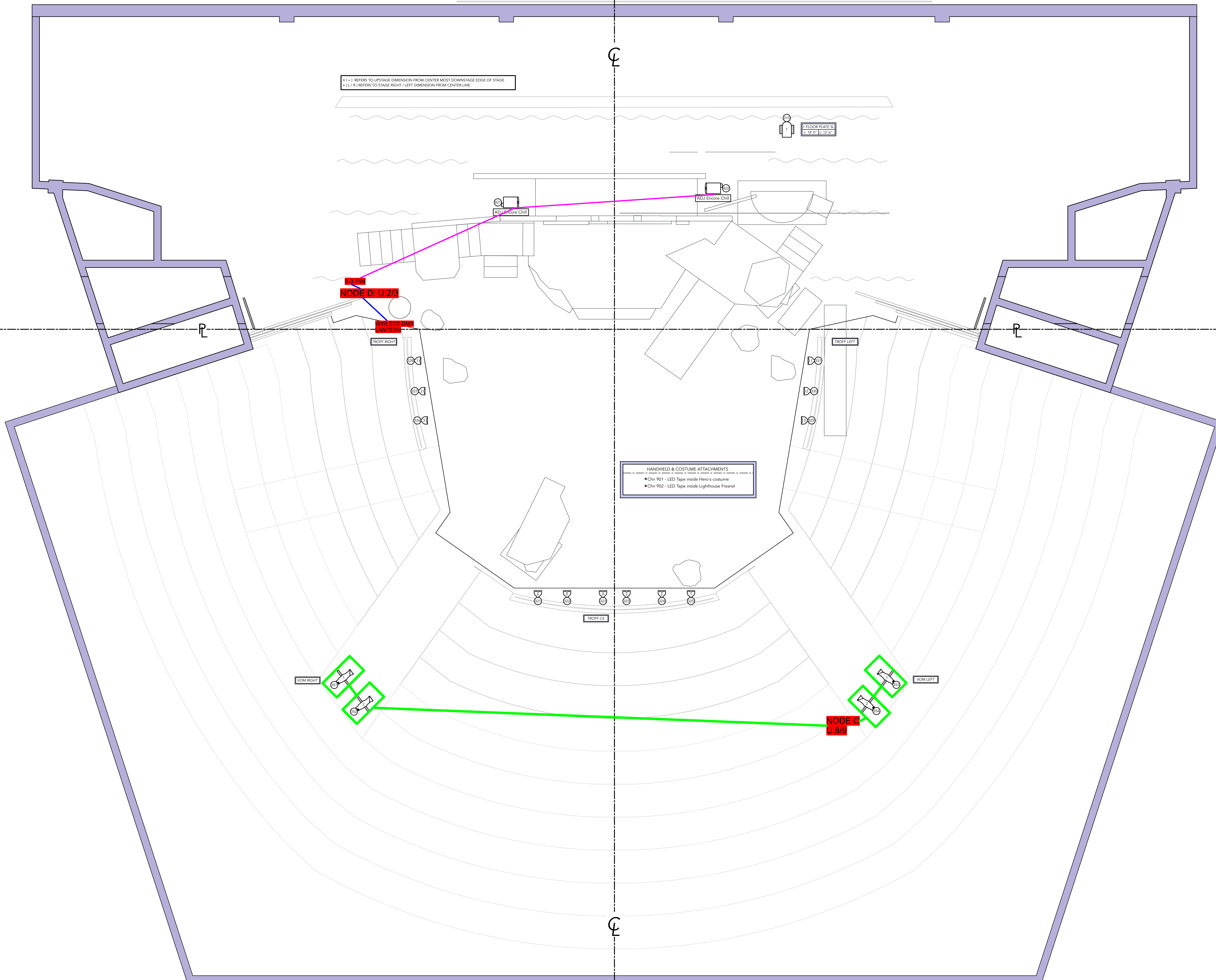
ASST. LIGHTING DESIGNER
CLAIRE WINSTON

HEAD ELECTRICIAN
AUDREY WUBBENA

VIRGINIA JACKSON BROWNING THEATER
 LORETTO-HILTON CENTER FOR THE PERFORMING ARTS
 130 EDGAR RD ST. LOUIS, MO 63119

LIGHTING DESIGN & DRAFTED BY:
ERIN RILEY
 314.933.0623
 erinriley031@gmail.com

5-PIN DMX



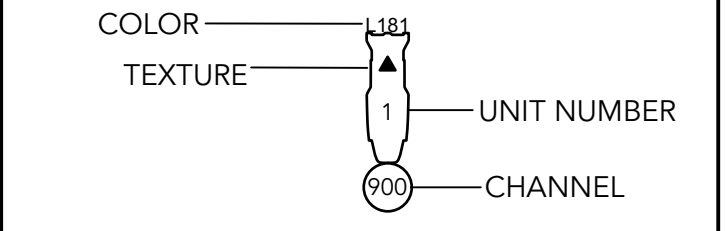
(+) REFERS TO UPSTAGE DIMENSION FROM CENTER MOST DOWNSTAGE EDGE OF STAGE
 (L/R) REFERS TO STAGE RIGHT / LEFT DIMENSION FROM CENTERLINE

HANDHELD & COSTUME ATTACHMENTS
 • Chn 901 - LED Tape inside Hero's costume
 • Chn 902 - LED Tape inside Lighthouse Fresnel

INSTRUMENT KEY

- ETC Source Four 14 Degree 750w
- ETC Source Four 19 Degree 750w
- ETC Source Four 26 Degree 750w
- ETC Source Four 36 Degree 750w
- Altmann Par 64 WFL 1000w
- Altmann Par 64 WFL 1000w
- Chauvet Ovation P915 260w
- Chauvet Reve E-3 260w
- Martin MAC Viper 1225w
- MOG ATMe Hazer
- ADI Encore Chl 800w

LABEL LEGEND



ACCESSORY KEY

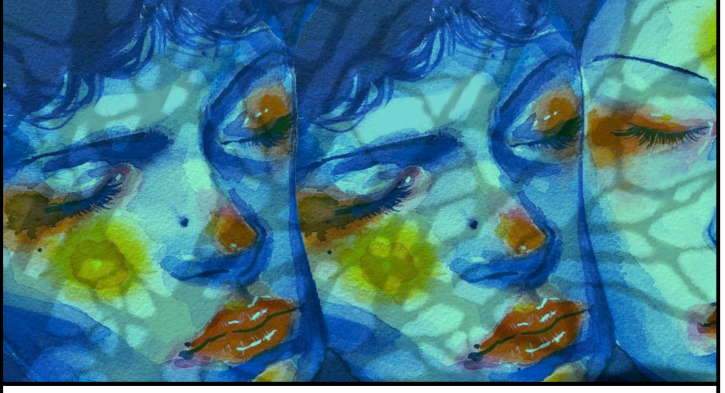
- Drop-in Iris
- 10in Top Hat
- Rosco I-Cue
- DMX Iris

NOTES

- Video monitors will be placed in Voms
- Please have extra cuts of color, frost, texture, and heat shield ready at focus

REVISIONS

- 02. 28. 23 Prelim
- 03. 01. 23 String lights Added
- 03. 24. 23 LEDs added, Fogger swapped out
- 03. 28. 23 LEDs added, barrels swapped out
- 04. 07. 23 Added chn 404-9 for aisles, removed pars on MainCat



MYTHS AND HYMNS

Written by: Adam Guettel

DIRECTOR
EVANGELINE WHITLOCK

SCENIC DESIGNER
LILY TOMASIC

COSTUME DESIGNER
ZOE COX

WIG AND MAKEUP DESIGNER
BEKAH TOONE

SOUND DESIGNER
KATELYN GILLETTE

ASST. LIGHTING DESIGNER
ASH NEECE

ASST. LIGHTING DESIGNER
CLAIRE WINSTON

HEAD ELECTRICIAN
AUDREY WUBBENA

VIRGINIA JACKSON BROWNING THEATER
 LORETTO-HILTON CENTER FOR THE PERFORMING ARTS
 130 EDGAR RD ST. LOUIS, MO 63119

LIGHTING DESIGN & DRAFTED BY:
ERIN RILEY
 314.933.0623
 erinriley031@gmail.com

DECK PLOT

PLATE **5** OF 5
 SCALE: 1/4" = 1'-0"
 WHEN PRINTED ON 24x36